



2011 / 2012

Rhode Island & Philharmonic Music School



CARTER CENTER

The Carter Center for Music Education & Performance, the only music school of its kind in Rhode Island, opened its doors in September of 2008. It is conveniently located right off Route I-195 exit 8 at 667 Waterman Avenue, East Providence.

This state-of-the-art facility includes:

Acoustically superior recital & rehearsal halls

31 private teaching studios

18-Station Electronic Keyboard Lab

Early Childhood, Suzuki & Music Therapy wing

Jazz, Rock, Blues & Percussion wing

Secure, free parking

Wi-Fi enabled lobby areas

We have a dedicated teaching, conducting and coaching faculty & staff that includes members of the Philharmonic Orchestra and graduates and faculty of the most prestigious collegiate music programs in the country.

CONTACT Us

Administrative Offices

Music School: 401.248.7001

Main Office: 401.248.7070

Fax: 401.248.7071

David Beauchesne

Executive Director

401.248.7002 • dbeauchesne@riphil.org

Annette Mozzoni

Music School Director

401.248.7032 • amozzoni@riphil.org

Christine Eldridge

Assistant Music School Director

401.248.7012 • celdridge@riphil.org

Susan Curzio

Youth Ensembles Coordinator

401.248.7038 • scurzio@riphil.org

Alyssa Inniger & Jared Elder

Carter Center Branch Coordinators

401.248.7001 • cartercenter@riphil.org

Jane Gaudette

Education Business Manager

401.248.7036 • jgaudette@riphil.org

Mychal Gendron

Suzuki Program Department Chair

401.248.7020 • mgendron@riphil.org

Matt Lynch

Registrar

401.248.7064 • mlynch@riphil.org

Rebecca Tingleff

Community Partnerships Coordinator

401.248.7054 • rtingleff@riphil.org

Tracy Enos

Assistant Registrar

401.885.9117 • egbranch@riphil.org

Register by mail, fax (with VISA, MC or Discover) or in person at the Carter Center, 667 Waterman Avenue, East Providence.

ABOUT US

The Rhode Island Philharmonic Music School encourages lifelong engagement with music through comprehensive music education and community partnership programs taught by orchestra members and other outstanding faculty. We prioritize artistry and education equally. Quality, access, diversity and collaboration are core values.

We believe everyone is musical and can benefit from music education. We serve students of all ages and ability levels – really! Our youngest students are newborns, and our oldest are in their 80s. Some students are on track for careers in music; others study for their own enjoyment. Still others participate in music therapy. We work with more than 1,500 students every week!

We teach all kinds of music. We offer a huge selection of education opportunities that include jazz, rock, folk, Caribbean, chamber music classes and large and small ensembles. We offer private lessons on over 30 instruments as well as voice. Our outstanding youth orchestra program and our wind ensembles, chamber music program and jazz ensembles are all remarkable.

We have exceptional faculty and award winning programs. The Philharmonic Music School has over 70 dedicated teachers on our faculty, with degrees from some of the finest music schools in the world. We match students with the teacher that will best meet the student's needs, personally and musically. The quality of our programs has been recognized by the National Endowment for the Arts, the National Guild of Community Schools of the Arts and the President's Commission on the Arts & Humanities.

We have wonderful facilities. The majority of our programs take place at the state-of-the-art Carter Center in East Providence. Completed in 2008, the Carter Center is the largest and newest dedicated community music school facility in New England. We also offer lessons at our East Greenwich Branch and at the Wheeler School in welcoming, well equipped environments.

We partner with the community. We collaborate with more than 170 partners in New England including schools, neighborhood centers and housing authorities, to bring performances and education opportunities to children and adults.

(See Page 17 for details)

We provide generous financial aid. We support the families of students under the age of 18 who cannot afford to fully finance music instruction. *(See Page 26 for details)*

We have a rich history of music education. The Youth Orchestra programs began in 1956. Lessons, chamber music and jazz/rock/blues programs began in 1986 under the auspices of the independent "Music School," which merged with the Philharmonic in 2000. We are a member of both the 230-school National Guild of Community Schools of the Arts and the League of American Orchestras.

The Rhode Island Philharmonic does not discriminate on the basis of race, ethnicity, gender, sexual orientation, religion, age, socio-economic status or disability.

CONTENTS

2	Carter Center
3	About Us
4	Suzuki Lessons & Classes
6	Early Childhood
8	Private Lessons / Music Theory
9	Youth Ensembles
13	Adult Ensembles
14	Concerts for Kids
15	Music Wellness
16	Music School Friends
17	Community Partners
18	Deals for Students
19	Music School Calendar
20	Tuition & Deposits
21	Discounts & Fees
22	FAQs
24	Faculty
26	General Policies
27	Directions

PHOTO CREDITS:

Richard W. Dionne: *page 18*
Ken Franckling: *pages 12, 15*
Andrea Horta: *pages 6, 7, 22*
Warren Jagger: *pages 2, 27*
Ray Larson: *pages 1, 4, 5, 8, 10, 11, 14, 23, 28*

PRINTER:

American Printing

DESIGN:

Andrea Horta



SUZUKI LESSONS & CLASSES

Children all over the world have their first musical experience through the Suzuki Method. Developed by the late Japanese teacher Dr. Shinichi Suzuki, the method uses the “mother tongue” approach to learning, based on the ease with which young children learn to speak their language. Dr. Suzuki discovered that these same principles apply when teaching young children to become fine musicians. Suzuki lessons focus on ear-training, developing good instrumental technique and producing a beautiful tone. After these fundamental skills are established, and when the young child is old enough to read words, we introduce step by step music reading. This marvelous early childhood approach also helps parents create positive musical environments in their homes and guides them in their daily schedule as they help their children learn to play an instrument. The Suzuki approach stresses a balanced, triangular relationship with the teacher, the parent and the student.

There are four components of the Suzuki Program:

OBSERVATION

New families are asked to observe both a private lesson and a group class in their area, or areas, of interest before entering the program.

EDUCATION

In this course parents will gain a thorough understanding of the Suzuki philosophy and method of instrumental music teaching.

LESSONS

Private lessons focus on developing good playing posture, tone, technique and expression.

GROUP CLASSES

Group classes develop ensemble playing, a review of repertoire, ear-training, singing and rhythm activities, music reading and other games.

SUZUKI COURSES

Suzuki Sampler

The Suzuki Sampler is for parents of younger children (ages 4-5) who have little or no knowledge of the Suzuki Method and whose children have not expressed an interest in a particular instrument. Using games, child-friendly activities and limited hands-on demonstration, teachers in our Suzuki Program will introduce young children to a different instrument* each week. These classes may be followed by a Parent Education course that is general in nature, not specific to any instrument, to provide a background in the philosophy of the Suzuki Method.



TEACHER TRAINING

Every Child Can!

An Introduction to Suzuki Education©

This course was created by the Suzuki Association of the Americas (SAA) to provide a background in the philosophy and method of instrumental music instruction for children pioneered by Japanese violin pedagogue Shinichi Suzuki (1898-1998). The course is open to music teachers, college music students and parents whose children study music using the Suzuki Method, and it is presented as a one day, six-hour class. It is not specific to one instrument, but provides a general introduction to the Suzuki Method for all instruments. This course is the required first step for anyone who wishes to become a Suzuki teacher, but it is also valuable to anyone interested in music education for young children.

Location: Carter Center, East Providence

Teacher: Mychal Gendron,
SAA Registered Teacher Trainer

Sunday, April 15, 2012

9:00am – 4:00pm

Tuition: (*Includes Every Child Can Booklet*)
\$90 – General; \$45 – Students

REGISTRATION DEADLINE:

Friday, March 30, 2012

**We offer Suzuki Lessons & Classes
for Violin, Cello, Guitar, Piano and Flute.*

The Suzuki Method is ideal
for children ages 4-9.

EARLY CHILDHOOD

...because no one is too young to make music!

Gordon-based* Early Childhood Music Classes are designed to enhance your child's musical development and to help you create a quality musical environment at home. The class curriculum is innovative, designed specifically to develop the music potential of young children.

Children learn music best if they are exposed to it informally, much as they are exposed to language. The process of music development is similar to that of language. Immediately upon birth, children begin to learn language by listening, and then observing, experimenting with sounds and eventually, speaking. The more speech children hear, and the richer the language sounds they experience, the sooner and better they develop their own language skills. Spoken language uses words; music uses tonal and rhythm patterns. In order to give meaning to a piece of music, your child must recall tonal and rhythm patterns from his/her vocabulary. The more your child listens to music and the more tonal and rhythm patterns in his/her vocabulary, the more meaningful music will be.

Class activities include singing and chanting, movement and pattern instruction. The goal of the curriculum is to increase children's music aptitude through engaging and entertaining musical activities, which will lay a foundation for lifelong music learning.

*Edwin E. Gordon, Research Professor at the University of South Carolina's Gordon Archive, is an influential researcher, teacher, author, editor and lecturer in the field of music education. Through extensive research, he has made major contributions to the study of music aptitudes, audiation, Music Learning Theory, rhythm in movement and music and music development in infants and very young children.



Infant Classes

Newborn to 18 months

The primary focus of this class is to introduce children to a wide variety of musical sounds. Children will begin to build a rich listening vocabulary, the foundation for future music singing and chanting, creating, reading and writing. Parents or Caretakers accompany the children to each class.

Toddler Classes

Ages 18 months to 3 years

The focus of this class is to expand children's listening vocabulary, to explore movement and to guide them as they begin to respond to the sounds that they hear. At this age, children will begin to imitate and compare their vocal and movement responses to those of others – an important step in the developmental process. Parents or Caretakers accompany the children to each class.

Preschool Classes

Ages 4 to 5 years

The focus of this class is to expand the children's listening and movement vocabulary and to guide the children as they respond with more accuracy to the sounds that they hear. They will begin to coordinate their breathing, moving and chanting and/or their breathing, moving and singing with themselves and then with others. They will put the finishing touches on their singing and chanting of tonal and rhythmic patterns and develop the muscle and breathing control that will allow them to enjoy more formal music instruction if they desire.

Mini Music

Ages 6 to 8 years

This is an exciting 15-week class created specifically to teach younger children



the fundamentals of music including instrument families, rhythm and counting, notes and rest values, keyboard familiarity, intervals and more. This is excellent preparation for private music lessons!

Minimum enrollment of 4 students required.

Maximum enrollment of 8 students per class.

Teacher: Catherine Thacker
Saturdays, 10:30am – 11:30am

Instrument Sampler

Ages 6 to 9 years

This 6-week class is designed to help each child choose his or her own instrument for private study. In this fun, interactive environment, members of the faculty will introduce a new instrument family – strings, woodwinds, brass, percussion, keyboard and guitar. Students observe live demonstrations, listen to recordings of great performances and learn to produce a sound on each instrument.

PRIVATE LESSONS

Our private lessons are 30, 45 and 60 minutes long, set up to fit the student's and teacher's schedules. We have a school year session from September to June and an 8-week summer session. Students new to the Music School may enroll at any time, and we will prorate tuition accordingly. We offer private lessons at both the Carter Center in East Providence and our East Greenwich Branch.

Our Music School faculty comprises more than 70 of the most accomplished music educators and performers in the area. Several are members of the Rhode Island Philharmonic Orchestra as well as other professional ensembles.

We provide individual lessons in all of the following areas:

BASSOON • CLARINET • CELLO • DOUBLE BASS • DRUMS
ELECTRIC BASS • FIDDLE • FLUTE • FRENCH HORN
GUITAR • HARMONICA • HARP • MANDOLIN • OBOE
PERCUSSION • PIANO • RECORDER • SAXOPHONE
STEEL DRUM • TIMPANI • TROMBONE • TRUMPET
VIOLA • VIOLIN • VOICE

If you are interested in an instrument not listed above, please call us. We will make every effort to find a qualified teacher for you.

For intermediate and advanced students new to the Music School we may suggest an informal audition to assess their needs and match them to the appropriate teachers.

Three Easy Steps to Register for Private Lessons:

1. Select an **instrument**.
2. Select a **branch location**:
Carter Center, 401.248.7001 or
East Greenwich Branch, 401.885.9117
3. **Call** the number at the Branch of your choice and begin the registration process.

Financial Aid in the form of Direct Tuition Assistance and Work-Study is available for financially qualified families. Call **401.248.7001** for an application or download the form at **riphil.org**.

See Page 20 for lesson lengths & tuition rates.



Classic Bass Lines

In-depth private lesson of the most classic and influential bass lines in contemporary music. Lessons will consist of proper technique, alternate fingerings and harmonic analysis.

Teacher: Bill Miele

Theory & Ear Training

This sequential, curriculum-based class includes the study of notation, scales, chords, intervals, ear training and more. The course benefits students who are interested in improving their sight reading skills, have an interest in composition (in any style), or want to deepen their understanding of music. It is also a great preparation for students considering majoring in music in college.

Minimum enrollment of 4 students required.

Placement evaluation:

September 24, 2pm

Students take a placement evaluation before starting the class.

YOUTH ENSEMBLES

All Youth Ensembles rehearse at the Carter Center.

Membership and placement for RIPYO, RIPPYWE and RIPPYJAZZ is by audition only.

For Youth Ensemble Discounts, see "Discounts and Fees" Page 21.

RIPYO

Youth Orchestras

Alexey Shabalin, *Music Director*

Since 1956 the Rhode Island Philharmonic Youth Orchestras has provided quality orchestral rehearsal and performance experiences for talented young musicians from Rhode Island and nearby Massachusetts and Connecticut. Our professional conducting staff is committed to providing the best musical and educational experiences for each student.

Symphony Orchestra

The Symphony Orchestra is a full orchestra made up of advanced high school students who have experience playing in large ensembles. The Symphony performs major symphonic works. In recent years their repertoire has included Beethoven's Symphony No. 6, Tchaikovsky's Symphony No. 4 and Wagner's Prelude and Love-Death from *Tristan and Isolde*. Each year RIPYO Symphony members perform side-by-side with the Rhode Island Philharmonic Orchestra in a Rush Hour concert conducted by Music Director Larry Rachleff.

Conductor: Alexey Shabalin
Saturdays, 9:30 am – 12:00 noon

Repertory Orchestra

The Repertory Orchestra is a full orchestra for advanced middle and high school musicians. This orchestra has recently performed Grieg's Norwegian Dances Nos. 2 & 3, Mozart's Symphony No. 25 and Schubert's *Rosamunde* Overture.

Conductor: Vincent Mattera
Saturdays, 9:30am – 12:00 noon

String Orchestra

The String Orchestra, primarily elementary and middle school students, performs original string ensemble repertoire. This ensemble has recently performed Bach's Brandenburg Concerto No. 3, Mozart's *Eine Kleine Nachtmusik* and Telemann's selections from *Don Quixote* Overture No. 10.

Conductor: Amy Paige Rawstron
Saturdays, 10:00 am–12:00 noon

Intermediate String Ensemble

The Intermediate String Ensemble is for elementary and middle school students with three to four years of experience playing their instruments. This ensemble performs Baroque and Classical repertoire written for small string orchestra.

Conductor: Erin Quinton Erban
Saturdays, 10:45 am–12:00 noon

String Ensemble

The String Ensemble is a performing group for younger string players. These students are generally in elementary school, have been studying their instruments for one to two years and are ready for some fundamental ensemble playing.

Conductor: Erin Quinton Erban
Saturdays, 9:30 am–10:30 am



RIPYWE

David Martins, *Music Director*

Founded in 2002, the Rhode Island Philharmonic Youth Wind Ensembles were begun to give advanced woodwind, brass and percussion students from Rhode Island and nearby Massachusetts and Connecticut an outstanding opportunity to rehearse and perform high quality wind ensemble repertoire. RIPYWE offers these students a challenging and rewarding musical experience.

Senior Division (*Grades 10–12*)

Conductor: David Martins
Tuesdays, 7:15-9:15 pm

Junior Division (*Grades 7–9*)

Conductor: Marc Blanchette
Wednesdays, 6:30-8:30 pm

CHAMBER MUSIC

Lois Finkel, *Department Chair*

Chamber Music classes provide intensive study and performance of standard

chamber music repertoire for string quartets, woodwind and brass quintets, piano trios and quartets and mixed ensembles. Students need a minimum of three years playing experience. Ensembles have coaching sessions, perform in recitals and participate in master classes with Music Director Larry Rachleff.

Coaches: TBA by audition placement and schedule availability.

Chamber Music Placement

Acceptance and placement is by audition. Students are placed in groups for the first semester based on skill level, age and needed instrumentation. Group assignments may be re-evaluated for the second half of the year.

Chamber Music Auditions

Auditions will be held on **Tuesday**, September 6 and **Saturday**, September 10 by appointment. For an appointment, please contact **Sue Curzio** at scurzio@riphil.org or **401.248.7038**.

OTHER SMALL ENSEMBLES

Piano Duet & Accompaniment

This class is for intermediate and advanced piano students. Students explore repertoire written for piano four hands and accompany students playing other instruments. This class presents pianists with a great opportunity to share the joy of music making!

Maximum number of students per class: 4

Teacher: Irina Tchantceva

Percussion Ensemble

The percussion ensemble performs and studies world drumming styles from the Caribbean, Africa and Brazil as well as contemporary American styles (Rock, Funk, Jazz). The ensemble learns basic hand drumming styles from conga drumming, timbales, drum-set and small percussion skills. The ensemble also learns beginner and intermediate tuned percussion pieces by Vic Firth and Thomas O'Conner as well as their own original compositions. The ensemble meets once a week. Students will perform in a recital at the end of each semester.

Coach: Rick Andre

Tuesdays, 6:30 – 7:30 pm

Clarinet Choir

This ensemble is for middle and high school students. Players study standard literature, learn ensemble playing skills and present recitals. Students need a minimum of three years playing experience and are placed by age and ability.

Conductor: Paul Surapine

Tuesdays, 4:30 – 5:30 pm

RIPYJAZZ

Wendy Klein, *Department Chair*

The Jazz & Rock Department offers a complete program of training for students interested in jazz or rock performance. Each student is placed in an ensemble based on ability. Ensembles are organized so that each student progresses from one level to the next. All jazz ensembles participate in two Department Recitals during the school year. New jazz & rock students audition for acceptance and placement. Returning jazz & rock students do not have to re-audition.

Big Band

This ensemble strengthens high school students' performance and appreciation of jazz. The Big Band performs at events such as Bright Night, FirstWorks Kids and the Philharmonic Ball.

Conductor: Wendy Klein

Wednesdays, 7:00 – 8:30 pm



JAZZ & ROCK COMBOS

Paul Murphy Touring Ensemble

This high level jazz ensemble features horns, guitar, bass, drums, keyboards and vocals. The students develop a challenging repertoire ranging from standards to contemporary jazz tunes. Membership is open to advanced high school and college musicians. This performance-oriented group was formed in honor of the late R&B guitarist Paul Murphy.

Coach: Greg Takemoto
Thursdays, 7:30 – 9:00 pm

Funk & Fusion Combo

This advanced group performs a broad repertoire that includes jazz, pop, R&B and funk. Emphasis is on tight ensemble playing and individual improvisation.

Coach: Greg Takemoto
Thursdays, 6:15 – 7:15 pm

Jazz Performers Combo

This group is designed for experienced high school jazz musicians. Students who play instruments not traditionally included in jazz bands (violin, flute, French horn, etc.) are encouraged to join the group.

Coach: John McKenna
Section A Mondays, 6:00 – 7:00 pm
Section B Mondays, 7:00 – 8:00 pm

Music Majors Combo

This group is for high school students who plan to major in music in college and pursue music as a career. With the guidance of the coach, students select the repertoire and create their own arrangements of the music they perform.

Coach: Ron Sanfilippo
Thursdays, 6:00 – 7:00 pm

Classic Jazz Combo

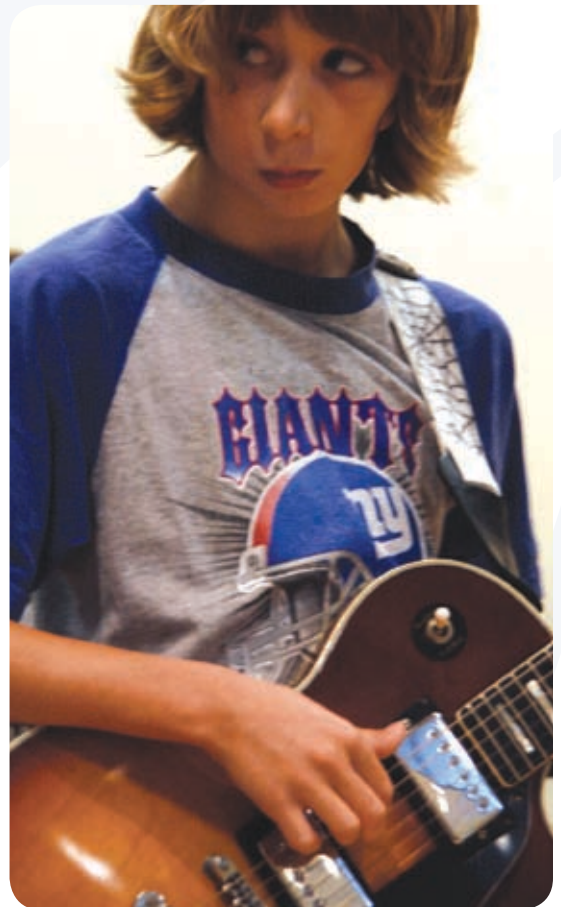
This group is for students with an interest in building repertoire, working on improvisational skills and learning to do their own arrangements from lead sheets.

Coach: Greg Takemoto
Tuesdays, 6:30 – 7:30 pm

Rock Combo

Students develop their technique, ensemble skills and solo performance ability while working on songs from the rock canon. We encourage students to bring their own compositions and arrangements to class.

Coach: Greg Takemoto
Section A Tuesdays, 7:35 – 8:35 pm
Coach: Mike Bernier
Section B Wednesdays, 7:00 – 8:00 pm



Jazz Improvisation Combo

This small ensemble of 4-6 high school students (2 horns, 3-4 member rhythm section) works to develop their improvisational skills in the jazz tradition. Focus is placed on the function and development of the rhythm section and their interaction with the soloists. The use of chord scales, improvisational techniques and practice routines are also covered.

Coach: Ron Sanfilippo

Wednesdays, 7:00 – 8:00 pm

Small Jazz Combo

This ensemble is for students continuing to develop their improvisational skills and jazz repertoire.

Coach: Ron Sanfilippo

Section A Tuesdays, 6:00 – 7:00 pm

Section B Tuesdays, 7:00 – 8:00 pm

ADULT ENSEMBLES

Adult Jazz Combo

Participants work on their ensemble and improvisational skills as they develop a repertoire of jazz standards.

Minimum enrollment of 4 students required.

Coach: Bill Miele

Wednesdays, 8:00 – 9:00 pm

Adult R&B Combo

This group includes instrumentalists and vocalists and plays the gems of the Motown library. Open to advanced high school students and adults.

Coach: Bill Miele

Thursdays, 7:00 – 8:00 pm



Community Orchestra

John Eells, Music Director

RIPCO is a full orchestra for adult musicians with extensive orchestral experience. Members range in age from college students to retirees. For the 2011/2012 season, we anticipate openings for strings and some wind positions as well as substitute players for all sections. For more information email ripco@riphil.org.

Conductor: John Eells

Mondays, 7:00–9:30 pm

Community Flute Ensemble

This ensemble is for advanced adult flutists. The ensemble will present a minimum of two concerts during the year.

Conductor: John Curran

Day / Time TBD

Adult Ensembles rehearse at the Carter Center.



CONCERTS FOR KIDS

In-School Ensemble Performances

Philharmonic Orchestra members and Music School faculty comprise more than 25 In-School Ensembles. These ensembles travel to area schools to perform and introduce students to various musical styles: Jazz, Classical, World and Folk. All performances are interactive and encourage active listening. While each of the groups focuses on a particular genre of music, some ensembles concentrate on specific topics such as composition, improvisation and musical storytelling. Additionally, our musicians will work with classroom teachers to design residencies and workshops to enhance their classroom curricula.

Annual Philharmonic Orchestra Education Concerts

Each spring, the Rhode Island Philharmonic Orchestra presents four school time education concerts for students at The Vets. In the past few years over 6,000 students annually have enjoyed a variety of concerts including "Assembling the Orchestra" (2011), "Sounds of Nature" (2010), "Dance Around the World" (2009) and "Tunes & Tales" (2008). Tickets are \$5.00 for each student, with one free chaperone ticket for every 20 students. Students may attend at no charge from schools in which 80% or more of the student population receive free or reduced lunch. We provide online curriculum guides in advance of the concerts for teachers to prepare students for the concerts.

Call **Rebecca Tingleff** at **401.248.7054** to book an In-School Ensemble or to reserve seats for an Education Concert.

MUSIC WELLNESS

Music Therapy

Health professionals who specialize in music therapy use music to address physical, emotional, cognitive and social needs of their clients. Music therapy is especially appropriate for clients diagnosed with autism to address their styles of speech and non-verbal communication skills. After assessing the strengths and needs of each client, one of our licensed music therapists will provide the appropriate therapy that will include creating, singing, moving to and/or listening to music. Music therapy strengthens clients' abilities and transfers them to other areas of their lives. It also provides avenues for communication that can be helpful to those who find it difficult to express themselves in words.

Research in music therapy supports its effectiveness in many areas: overall physical rehabilitation and movement, improved communication and socialization, increased self awareness and self confidence. It provides an outlet for expression of feelings as well as emotional support for clients and their families. Music therapy may be listed as an option on a child's Individual Education Plan (IEP).

Clients will begin with two assessment sessions to determine needs, goals and future action. Children 6 years old and younger will have 45-minute sessions; children 7 years old through adult will have hour-long sessions. These two sessions will include time for our therapist to assess each client's needs and abilities as well as time for written and oral discussion with the caregiver. These sessions will be at the fee rate.

Certified Music Therapists:

Crystal King, Emily Hess and Kristi Rood

Please see Page 20 for Special Arrangement Fee Schedule for Music Therapy.

The Alexander Technique

This technique is a highly-effective method used to release tension and improve coordination. It is especially beneficial to musicians dealing with excessive stress, injury or pain, to enhance their performance skills. It has helped generations of instrumentalists and singers perform with less stress, easing the likelihood of injury and improving the quality of their performance. Students are taught practical tools to improve their breathing and coordination to produce performances which are more fluid and less tense or rigid.

The Alexander Technique is included in the curriculum of a number of conservatories and university music departments.

Teacher: Mary Derbyshire

These lessons are only offered to enrolled students, family members of students, orchestra musicians, faculty and staff.

Please see Page 20 for rates for Alexander Technique.



MUSIC SCHOOL FRIENDS

Junior Providence Singers

T.J. Harper, DMA, *Music Director*

The Junior Providence Singers (JPS) is a choral training and performance program for high school singers in southern New England. Anticipated performances in 2011 include a Fall concert with the Providence Singers and Handel's *Messiah* in December with the Providence Singers and the Rhode Island Philharmonic. Auditions will be held in September by appointment. Rehearsals are held at the Carter Center on Tuesdays, 6:30 - 9:00pm, from late September to December. For details, please visit ProvidenceSingers.org, email operations@providencesingers.org, or call 401.751.5700.

Rhode Island Children's Chorus

Christine Noel, DMA, *Artistic Director*

The acclaimed Rhode Island Children's Chorus provides vocal instruction and choral singing opportunity for students in grades 2 to 12. Our four ensembles, based on age and experience, are conducted by Dr. Noel and the RICC staff. Children gain confidence and make new friends while learning healthy vocal technique, sight singing and ear training skills and performance etiquette.

RICC Chamber Chorus

Grades 7-12 Advanced

Conductor: Christine Noel

RICC Principal Chorus

Grades 5-12 Advanced/Intermediate

Conductor: Christine Noel

RICC Lyric Chorus

Grades 4-8 Beginner/Intermediate

Conductor: John Henry Burns

RICC Training Chorus

Grades 2-4 Beginner

Conductor: Ms. Ashley Prickel
& Staff Instructors

Choruses meet at the Carter Music Center.



Auditions

Prior experience is not necessary, but all children must have a brief audition. Auditions will be held at the Carter Center in August 2011 and in January of 2012, dates TBA. For more information, please visit our website at richildrenschorus.org or contact Joyce Wolfe at joyce-wolfe@cox.net or 401.568.4022.

The Wheeler School

The Philharmonic Music School provides private lessons on bass, drums, flute, guitar, harmonica, piano, saxophone and voice for Wheeler School students on the Wheeler campus, Monday through Friday from 3:00 - 5:30pm. For more information, please contact the Music School at 401.248.7001.

COMMUNITY PARTNERS

Thank you to our donors and sponsors!

Our education programs continue to grow thanks to the support of the following community partners. Funding from these corporations, foundations and individuals supports access to educational music performances, financial aid, scholarships and community programming for students throughout our region.

SPONSORS

Rhode Island State Council on the Arts	The Joseph and Rosalyn Sinclair Foundation, Inc.	Textron Charitable Trust	Ocean State Charities Trust
Champlin Foundations	The Carter Family Charitable Trust	Citizens Bank Foundation	Frank B. Hazard General Charity Fund
Rhode Island Foundation	The June Rockwell Levy Foundation	University Orthopedics	Harry M., Miriam C., & William C. Horton Fund
TACO/White Family Foundation	The Amgen Foundation	State of Rhode Island & Providence Plantations	Shriners of Rhode Island Charities Trust
CVS Caremark Charitable Trust	Music Drives Us - Boch Family Foundation	Anna Louise McInerney Fund	Alice I. Sullivan Foundation of Collette Vacations
Hasbro Children's Fund	TD Bank	City of Pawtucket	Frederick C. Tanner Memorial Fund Inc.
National Endowment for the Arts	The John Clarke Trust	Ann and Gordon Getty Foundation	The Grant Sherburne Fund
	City of East Providence	ACMP Foundation, Inc.	

Many thanks to our individual donors without whose support we would not be able to provide music education.

Our Sponsors & Donors support:

Education Concerts

In 2011, over 6,300 students from all over New England attended four Education Concerts presented by the Philharmonic Orchestra at The Vets. Over 30% of these students experienced the joy of these concerts at no cost. Thanks to the generosity of our donors and sponsors, every ticket was subsidized.

Financial Aid/Scholarships

The Music School is committed to providing music education and audience experiences to all members of the community. We provide financial support annually to over 33% of our students.

Community Partnerships

The Music School partners with schools, community centers and social service agencies to design exciting, high quality music education programs and performance opportunities for all. We offer sequential music instruction on a variety of instruments as well as music appreciation, world music and music technology, at partnership locations throughout southern New England. We create classroom residencies in schools that connect music and the arts to all academic subjects. Our programs help participants gain proficiency in music and foster their growth as individuals.

Our valued partners help us achieve our goal of making music accessible. For more information about partnering with the Music School to provide music performance and education opportunities for your organization, contact **Rebecca Tingleff** at **401.248.7054**.



DEALS FOR OUR STUDENTS

Rhode Island Philharmonic Orchestra's exclusive deals for Music School students:

Every tuition based Music School student receives a Music School ID card.

Show the Music School ID card and...

ONE The student and one other person may attend any or all four Philharmonic Orchestra Friday night **Open Rehearsals FREE** of charge.

October 14, 5:30pm

Michael Stern, *conductor*

Joyce Yang, *piano*

(Ravel Piano Concerto in G Major)

January 27, 5:30pm

Larry Rachleff, *conductor*

Alon Goldstein, *piano*

(Greig Piano Concerto in A Minor)

Apr 13, 5:30pm

Larry Rachleff, *conductor*

Alban Gerhardt, *cello*

(Tchaikovsky Variations on a Rocco Theme)

May 4, 5:30pm

Larry Rachleff, *conductor*

Elizabeth Weigle, *soprano*

Randall Scarlata, *baritone*

The Providence Singers

(Brahms A German Requiem)

TWO Early Friday evening Amica Rush Hour Series Subscriptions: **NEW this year!**

\$50: 2 adults, 2 students; \$5 for additional family member (18 & under)

\$35: 1 adult, 1 student; \$5 for additional family member (18 & under)

September 23, 6:30pm

Larry Rachleff, *conductor*

Ilya Yakushev, *piano*

(selected movements)

Tchaikovsky Piano Concerto No. 1

November 18, 6:30pm

Larry Rachleff, *conductor*

(selected movements)

Respighi *Pines of Rome*

February 24, 6:30pm

Larry Rachleff, *conductor*

Alexander Kerr, *violin*

(selected movements)

Bernstein Serenade

Side-by-side with Members of RIPYO

March 23, 6:30pm

Larry Rachleff, *conductor*

Augustin Hadelich, *violin*

(selected movements)

Beethoven Violin Concerto in D Major

THREE Each Music School Student (*ages 7-18*) may buy a **HALF PRICE** single ticket to any Saturday night Classical or Friday Rush Hour concert.

Additional Music School Family Benefits

Philharmonic-sponsored Master Classes and Workshops: Music School families attend **FREE** of charge.

Performance Opportunities

Student recitals are held periodically during the year. Students appear at the recommendation of their teachers. Parents and friends are always welcome.

All Music School families may attend all student Recitals and Chamber Music concerts **FREE** of charge.

Music School Calendar

S	M	T	W	T	F	S
				9/1	9/2	9/3
9/4	9/5	9/6	9/7	9/8	9/9	9/10
9/11	9/12	9/13	9/15	9/16	9/17	9/18
9/18	9/19	9/20	9/21	9/22	9/23	9/24
9/25	9/26	9/27	9/28	9/29	9/30	10/1
10/2	10/3	10/4	10/5	10/6	10/7	10/8
10/9	10/10	10/11	10/12	10/14	10/14	10/16
10/16	10/17	10/18	10/19	10/20	10/21	10/22
10/23	10/24	10/25	10/26	10/27	10/28	10/29
10/30	10/31	11/1	11/2	11/3	11/4	11/6
11/6	11/7	11/8	11/9	11/10	11/11	11/12
11/13	11/14	11/15	11/16	11/17	11/19	11/19
11/20	11/21	11/22	11/23	11/24	11/25	11/26
11/27	11/28	11/29	11/30	12/1	12/2	12/3
12/4	12/5	12/6	12/7	12/8	12/9	12/10
12/11	12/12	12/13	12/14	12/15	12/16	12/17
12/18	12/19	12/20	12/21	12/22	12/23	12/24
12/25	12/26	12/27	12/28	12/29	12/30	12/31
1/1	1/2	1/3	1/4	1/5	1/6	1/7
1/8	1/9	1/10	1/11	1/12	1/13	1/14
1/15	1/16	1/17	1/18	1/19	1/20	1/21
1/22	1/23	1/24	1/25	1/26	1/27	1/28
1/29	1/30	1/31	2/1	2/2	2/3	2/4
2/5	2/6	2/7	2/8	2/9	2/10	2/11
2/12	2/13	2/14	2/15	2/16	2/17	2/18
2/19	2/20	2/21	2/22	2/23	2/24	2/25
2/26	2/27	2/28	2/29	3/1	3/2	3/3
3/4	3/5	3/6	3/7	3/8	3/9	3/10
3/11	3/12	3/13	3/14	3/15	3/16	3/17
3/18	3/19	3/20	3/21	3/22	3/23	3/24
3/25	3/26	3/27	3/28	3/29	3/30	3/31
4/1	4/2	4/3	4/4	4/5	4/6	4/7
4/8	4/9	4/10	4/11	4/12	4/13	4/14
4/15	4/16	4/17	4/18	4/19	4/20	4/21
4/22	4/23	4/24	4/25	4/26	4/27	4/28
4/29	4/30	5/1	5/2	5/3	5/4	5/5
5/6	5/7	5/8	5/9	5/10	5/11	5/12
5/13	5/14	5/15	5/16	5/17	5/18	5/19
5/20	5/21	5/22	5/23	5/24	5/25	5/26
5/27	5/28	5/29	5/30	5/31	6/1	6/2
6/3	6/4	6/5	6/8	6/7	6/8	6/9
6/10	6/11	6/12	6/13	6/14	6/15	6/16
6/17	6/18	6/19	6/20	6/21	6/22	6/23
6/24	6/25	6/26	6/27	6/28	6/29	6/30

September

5 Labor Day (Closed)
 10 Music School Opens
 28-29 Rosh Hashana (Closed)

October

8 Yom Kippur (Closed)
 10 Columbus Day (Closed)

November

23-27 Thanksgiving (Closed)

December

20-31 Holiday Recess

January

1-2 Holiday Recess
 16 Martin Luther King Day (Closed)

February

20-26 Winter Recess

April

16-22 Spring Recess

May

26-28 Memorial Day (Closed)

June

11 Last Day of Lessons
 12-30 Make-up Lessons

Weeks

33 • Monday
 35 • Tuesday
 33 • Wednesday
 33 • Thursday
 34 • Friday
 33 • Saturday

Payment Due Dates

Annually

9/10/2011

Semi-Annually

2011: 9/10; 2012: 1/14

Quarterly

2011: 9/10, 11/5; 2012: 1/14, 3/17

Monthly

2011: 9/10, 10/8, 11/5, 12/3;
 2012: 1/14, 2/11, 3/17, 4/14

TUITION & DEPOSITS

Individual Lessons

All Tuition rates are a combination of the deposit amount **PLUS** the amount listed below in the appropriate column. The Tuition rates listed below are based on quarterly payments. We discount tuition by \$2 per hour for students who pay the entire amount at the start of the session. We discount tuition by \$1 per hour for students who pay in two semi-annual installments.

REGULAR RATES	DEPOSIT	MON, WED, THUR & SAT (33 weeks)	TUESDAY (35 weeks)	FRIDAY (34 weeks)
30 MINUTES	\$103.50	\$1035.00	\$1,104.00	\$1,069.50
45 MINUTES	\$155.25	\$1,552.50	\$1,656.00	\$1,604.25
60 MINUTES	\$207.00	\$2,070.00	\$2,208.00	\$2,139.00

*SPECIAL ARRANGEMENT RATES	DEPOSIT	MON, WED, THUR & SAT (33 weeks)	TUESDAY (35 weeks)	FRIDAY (34 weeks)
30 MINUTES	\$126.00	\$1,260.00	\$1,344.00	\$1,302.00
45 MINUTES	\$189.00	\$1,890.00	\$2,016.00	\$1,953.00
60 MINUTES	\$252.00	\$2,520.00	\$2,688.00	\$2,604.00

*Special Arrangement Teachers: Cheryl Bishkoff, John Curran, Lois Finkel, Jorge Gardos, Ian Greitzer, Ron Haroutunian, Mark Schroeder, Alexey Shabalin, Charles Sherba, Consuelo Sherba and Susan Thomas. Music Therapists are included in this category.

Theory & Ear Training Classes

\$315 (14 week course begins the first week of October.)

Piano Duet & Accompaniment

\$312 Trios & Quartets

\$408 Duos (12 week course)

Community Flute Ensemble

Membership Dues \$125.00

Suzuki

Suzuki tuition is a combination of the deposit amount **PLUS** the amount listed under "Balance Due". Tuition rates listed are based on quarterly payments. Tuition discounts are available for semi-annual and annual payments.

SUZUKI PREP & SUZUKI PLUS	DEPOSIT	BALANCE DUE (Paid Quarterly)	SUZUKI PROGRAM	DEPOSIT	BALANCE DUE (Paid Quarterly)
30 MINUTES	\$103.50	\$1,035.00	30 MINUTES	\$279.75	\$1,563.75
45 MINUTES	\$155.25	\$1,552.50	45 MINUTES	\$331.50	\$2,081.25
60 MINUTES	\$207.00	\$2,070.00	60 MINUTES	\$383.25	\$2,598.75

Early Childhood Classes

Early Childhood and Instrument Sampler tuitions are payable in full by the first class.

A minimum, non-refundable 25% deposit is due at the time of registration.

EARLY CHILDHOOD CLASSES	DEPOSIT	BALANCE DUE AT FIRST CLASS	TOTAL
INFANT CLASS, TODDLER CLASS, PRE-SCHOOL CLASS (10 weeks)	\$45.00	\$135.00	\$180.00
INSTRUMENT SAMPLER (6 weeks)	\$31.50	\$94.50	\$126.00
MINI MUSIC (15 weeks)	\$60.00	\$180.00	\$240.00

Ensembles

A minimum, non-refundable deposit of 25% of the Ensemble's Quarterly tuition is due at registration. Ensemble rates are a combination of the deposit amount **PLUS** the amount listed under "Balance Due". The tuition rates listed are based on quarterly payments. Tuition discounts are available for semi-annual and annual payments.

ENSEMBLES	DEPOSIT	BALANCE DUE (Paid Quarterly)	TOTAL
RIPYO: SYMPHONY, REPERTORY; RIPPYWE JR. & SR.; RIPPY JAZZ BIG BAND	\$135.00	\$405.00	\$540.00
CLARINET CHOIRS; PERCUSSION ENSEMBLE	\$140.00	\$420.00	\$560.00
RIPYO STRING ORCHESTRA	\$127.50	\$382.50	\$510.00
RIPYO STRING ENSEMBLE & INTERMEDIATE STRING ENSEMBLE	\$101.25	\$303.75	\$405.00
RIPPYJAZZ: PAUL MURPHY TOURING ENSEMBLE, ROCK COMBO, JAZZ PERFORMERS COMBO, FUNK & FUSION, MUSIC MAJORS COMBO, CLASSIC JAZZ COMBO, YOUNG PERFORMERS COMBO, JAZZ IMPROVISATION COMBO, SMALL JAZZ COMBO	\$180.00	\$540.00	\$720.00
CHAMBER ENSEMBLES: TRIOS & LARGER	\$182.00	\$546.00	\$728.00
CHAMBER ENSEMBLES: DUOS	\$238.00	\$714.00	\$952.00



DISCOUNTS

Family

Families with three or more members enrolled in Private Lessons (including Suzuki) will receive a 5% discount off the collective private lesson tuitions.

Youth Ensembles

Students enrolled in Private Lessons or Suzuki as well as Youth Ensembles will receive discounts off the Ensemble tuition(s): 10% off for one Ensemble, 15% off each for two Ensembles and 20% off each for three or more Ensembles.

(No Private Lessons or Suzuki discount)

Students enrolled in more than one Ensemble, but who do not take weekly private lessons at the Music School, will receive a 10% discount off each of the 2nd, 3rd and 4th Ensemble tuition.

We offer Special Discounts to Members of St. Luke's Church in East Greenwich (location of our East Greenwich Branch) and Philharmonic Employees (orchestra members, faculty, staff and their children).

Discounts are not cumulative. Only the ensemble discount will be applied for any students who take private lessons and participate in ensembles and classes.

FEES

Registration

This non-refundable annual fee is due at registration. The fee is \$26.00 for an individual student and \$52.00 for a family of two or more students.

Late Registration

We will charge a Late Registration Fee of \$35.00 to students who attend lessons, group classes or ensemble rehearsals without registering and paying the \$26.00 registration fee.

Non-Sufficient Funds

We will add a fee of \$25.00 to a student's account for bounced checks or declined credit cards. If a family has selected an automatic payment plan with a credit card that has been replaced, please notify the registrar to avoid NSF fees.



FAQs

When should my child begin his/her music education?

Right now! We have Early Childhood Classes beginning with newborns through 5 years old. We recommend lessons for children between 5-7 years old, for the Suzuki Method children may begin at 3 or 4 years old. Attention span, reading skills and time for daily practice are factors to consider. In general we advise waiting until a child is 10 to 12 to begin private voice lessons. We can help determine a child's readiness for private lessons.

How do we select an instrument?

Our 6-week Instrument Sampler class for ages 6-9 gives children hands-on experience with various instruments.

How much should a child practice?

Our teachers recommend a 6 year old practice 10-15 minutes a day. Older children should practice more. The length of

practice time is not the only important factor - the quality of the practice is very important.

Do you have lessons in jazz, rock or pop?

Yes! We have faculty members who specialize in these music genres.

If we choose piano lessons, do we need to own a piano or is a keyboard okay?

You should have a piano for daily practice. Some keyboards are acceptable; please check with the teacher.

What if my child starts lessons, but changes his/her mind?

Children may become frustrated because they expected learning music would be easier. Parental support through this period is essential. Our teachers have advice or may be able to modify the lessons to help your child.

Do you teach adult beginners?

Absolutely! It's never too late to take music lessons. We have adult students who have never played an instrument before and others who resume lessons they had taken when they were younger.

What performance opportunities do students have?

The Music School has many performance opportunities. "Performance Hours" are held at least monthly where students of all ages and levels gain performance experience. Many teachers also have studio recitals with their private students. Several departments hold multiple department recitals.

When will I know my child's scheduled lesson day, time and teacher?

We contact returning students by phone or email before the beginning of the session in September provided they register by the deadline. **New families** speak with staff over the phone to discuss scheduling and confirm lesson and time before the start of the first lesson.

What if we can't attend lessons every week?

We expect students to attend lessons every week. If the teacher agrees to fewer weeks, the student must complete a "Teacher Consent" form, have it signed by the teacher and the teacher submits it to the registrar, listing all the dates the student will be absent. Without a signed consent form, we will bill the student for all the weeks of the school year.

What if our schedule changes?

If your family's schedule changes between the date you register and the date you

receive your day and time slot confirmation, please call us immediately, and we will make every effort to accommodate your change request before the session begins. If your schedule changes after lessons have begun, we will try to accommodate you, but we cannot guarantee a new time slot with the same teacher.

What if my child joins a sports team or club that conflicts with his/her lesson time?

Studying music is a long-term commitment. A disruption in the weekly routine of lessons and practice may affect your child's progress. We will try to accommodate your new schedule, but we cannot guarantee that we will arrive at a mutually satisfactory solution.

For additional questions, please call the Music School at **401.248.7001**.



FACULTY

Department Chairs

ROBERTA JANELLE BISHOP, *Voice*
 LOIS FINKEL, *Chamber Music*
 MYCHAL GENDRON, *Suzuki, Guitar*
 LAURA GULLEY, *Suzuki Strings*
 WENDY KLEIN, *Jazz, Rock & Blues*
 EMI KULLBERG, *Suzuki Piano*
 DANIELA RUBINSTEIN &
 DAVID RUBINSTEIN, *Strings*
 IRINA TCHANTCEVA & KAREN DINGLEY,
Piano & Keyboard Instruments
 MARY SADOVNIKOFF, Emeritus, *Piano &*
Keyboard Instruments

Piano & Keyboard Instruments

DAWN CHUNG, *Piano, Jazz Piano*
 B.A., National Taiwan University;
 Diploma, Berklee College of Music;
 M.M., URI

DIANA R. DANSEREAU, *Piano,*
Early Childhood
 B.M., Eastman School of Music; M.M.,
 Pennsylvania State University; Ph.D.,
 Georgia State University

JACQUELINE DEVILLERS, *Piano, Recorder,*
Recorder Ensembles
 Piano & recorder studies, Paris Conservatory

KAREN DINGLEY, *Piano,*
Piano Department Co-Chair
 B.A., Music, Smith College; M.A.,
 Musicology, New York University

AURORA EMDJIAN, *Piano*
 B.M., Summa cum Laude, Tavreezian
 Music College; M.M., Piano Performance,
 Accompaniment, Chamber Ensemble
 & Pedagogy, Yerevan Gomidas Music
 Conservatory

ROUZAN GEVORKIAN, *Piano*
 M.M., Komitas State Conservatory, Armenia

MARGARET GIDLEY, *Piano*
 B.A., Pembroke College/Brown University

TATYANA GOLUB, *Piano*
 B.A., Dnepropetrovsk State Musik
 College; M.M., Donetsk State Music
 Academy

AIDA KALIKIAN, *Piano*
 B.A., Magna cum Laude, Romanos
 Melikian Music Institute; M.A., Komitas
 State Conservatory

EMI KULLBERG, *Suzuki Piano, Piano*
 SEE EARLY CHILDHOOD & SUZUKI

CHARLENE MAKER, *Piano*

DEBRA MANN, *Piano, Jazz Piano*
 B.M., cum Laude, Berklee College
 of Music

ERIC MAZONSON, *Piano*
 B.M. and M.M. Piano Performance,
 Boston University

PAULA MCKAY-CORKUM, *Piano*
 B.A., Music, French, English, UMass;
 M.A., Administration, Northeastern
 University; Suzuki training

JOHN NORIGIAN, *Suzuki Piano, Piano*
 B.M., URI; M.M., Cleveland Institute
 of Music

MARY SADOVNIKOFF, *Piano, Fortepiano,*
Piano Department Chair, Emeritus
 B.M., Radcliffe College; M.F.A., Musical
 Composition, Brandeis

RON SANFILIPPO, *Jazz Piano, Jazz Combos*
 B.M., cum Laude, Berklee College
 of Music

NONETTA SHATAKHTSIAN, *Piano*
 B.A., Romanos Melikian Music College;
 M.A., Erevan State Conservatory;
 Teaching Certificate, RI College

DR. IRINA TCHANTCEVA, *Piano, Piano*
Department Co-chair, Chamber Music
 B. A., Yerevan College of Music; M. M.,
 Armenian State Conservatory; D. M.,
 Moscow State Conservatory

CATHERINE THACKER, *Piano*
 B.M. University of Utah

Strings

PAULINKA DE ROCHEMENT, *Suzuki*
Violin, Viola
 SEE EARLY CHILDHOOD & SUZUKI

ERIN QUINTON ERBAN, *Violin, Viola,*
RIPYO String, Ensembles Conductor
 B.A., RIC

LOIS FINKEL*, *Violin, Chamber Music*
 Department Chair
 B.A., Classics & Music, Cornell University;
 M. M., Violin Performance, Eastman
 School of Music

JORGE GARDOS, *Violin, Chamber Music*
 Graduate, Hungarian Music Academy,
 M.M., Indiana University, Post-graduate
 studies, New York University

LAURA GULLEY*, *Suzuki Violin, Suzuki*
 String Department Chair
 SEE EARLY CHILDHOOD & SUZUKI

NICOLE LAPRISE, *Violin*
 B.M. Music Performance, RIC

PAMELA LOWELL, *Cello*
 B.M., URI

RACHEL MALONEY, *Fiddle*
 VINCENT MATTERA, *Violin, RIPYO*
Repertory Orchestra Conductor
 SEE COMMUNITY ENSEMBLES

BILL MIELE, *Jazz Bass, Adult Jazz Combo*
 Berklee School of Music

ELIOT PORTER*, *Bass, Electric Bass*
 B.A., Boston University; A.M., Brown
 University

AMY RAWSTRON*, *Violin,*
RIPYO String Orchestra Conductor
 B.M., Mannes College

MARINA RELYEA, *Violin*
 B.M. Viola Performance, Florida State
 University; M.M. Viola Performance,
 San Francisco

DANIELA RUBINSTEIN, *Violin,*
String Department Co-Chair
 Boston University School for the Arts;
 Instituto de Música de la Universidad
 Católica de Chile

DAVID RUBINSTEIN, *Violin, Viola,*
String Department Co-Chair
 B.M., New School of Music; Graduate
 studies in Viola, New England
 Conservatory

MARK SCHROEDER*, *Cello*
 B.M., Eastman School of Music;
 M.M., Cleveland Institute of Music

ALEXEY SHABALIN*, *Violin, RIPYO Music*
Director/Symphony Conductor
 SEE COMMUNITY ENSEMBLES

CHARLES SHERBA*, *Violin, Chamber Music*
 CONSUELO SHERBA*, *Viola, Chamber Music*
 B.M., City University of New York;
 Graduate studies, UMass & University
 of Wisconsin

ADRIENNE TAYLOR, *Cello*
 B.M. & Performer Diploma, Indiana
 University; M.M., Northwestern University

Woodwinds, Brass & Percussion

RICK ANDRE, *Percussion*
 Drumset studies at Berklee College
 of Music

DAVID BOLENDER, *Saxophone*

CHERYL BISHKOFF*, *Oboe*
 B.A, M.A. Virginia Commonwealth University

GENE CRISAFULLI*, *Trumpet*
 B.M.E & B.M. Applied Trumpet, Hartt
 School; M.M., Yale University

JOHN CURRAN, *Flute, Flute Choir*
 B.A., URI; flute studies, New England
 Conservatory

JACQUELINE DEVILLERS, *Piano, Recorder,*
Recorder Ensembles
 SEE PIANO & KEYBOARD INSTRUMENTS

JIM DELILLO, *Trombone, Guitar*
 SEE PLUCKED STRINGS & TRADITIONAL INSTRUMENTS

IAN GREITZER*, *Clarinet*
 B.M. & M.M., New England Conservatory;
 Tanglewood Fellowship Recipient

RON HAROUTUNIAN*, *Bassoon*
 B.M., New England Conservatory;
 Graduate Assistant, Boston University

CHARLES KALAJIAN
 B.M. in Music Performance, URI

ROBBIE LEPAGE, *Trumpet*
 B.M., Northwestern, B.M., Hartt School;
 M.M., Eastman School, Trumpet
 Performance

KAREN MARKS, *Flute, Suzuki Flute,*
Flute Choir
 SEE EARLY CHILDHOOD & SUZUKI

JOHN MCKENNA, *Saxophone, Jazz Combos*
 B.M., William Paterson University

CRAIG MCNUTT*, *Percussion*
 B.M., Hartt School of Music; M.M., Yale
 University; D.M.A., New England
 Conservatory

JANE REVKIN, *Flute, Recorder,*
Early Childhood
 B.S., URI; M.E., Lesley University;
 Kodály method certificates

JASON ROSEMAN, *Steel Pan*

PAUL SURAPINE, *Clarinet, Clarinet Choir*
 B.M., Hartt School of Music,

GREGORY TAKEMOTO, *Saxophone,*
Clarinet, Paul Murphy Touring Ensemble
Conductor, Jazz Combos
 Chicago State University; candidate,
 B.A., Jazz Performance, RIC

SUSAN THOMAS*, *Flute*
B.M., cum Laude, New England
Conservatory; M.A., Lesley University
NICK TOSCANO, *Percussion*
B.A., Hartt School of Music

Plucked Strings & Traditional Instruments

JOSHUA BELL, *Mandolin*
MIKE BERNIER, *Guitar & Electric Bass*
Berklee College of Music
CHRIS CAPALDI, *Guitar*
B.M., Berklee College of Music
CHRISTINE CHITO, *Guitar*
A.D. Fine Arts, CCRI
BEAR CONNELLY, *Guitar*
B.A. in Music, Skidmore College
HYUNJUNG CHOI*, *Harp*
B.A., Ewah University, Seoul, Korea;
M.M., Tufts
JIM DELILLO, *Guitar, Trombone*
B.S., RIC; Graduate Studies RIC, URI &
Berklee, Awarded Life-Time Teacher
Certificate by RI Board of Regents
JACQUELINE DEVILLERS, *Piano, Recorder,*
Recorder Ensembles
SEE PIANO & KEYBOARD INSTRUMENTS
MYCHAL GENDRON, *Classical and Suzuki*
Guitar, Suzuki Program Coordinator,
Guitar Department Chair
SEE EARLY CHILDHOOD & SUZUKI
GARRISON HULL, *Guitar*
B.M., Concert Guitar, Graduate Studies,
Composition, George Mason University;
Associates Degree in Music, Northern
Virginia Community College
JAMES MACARTNEY, *Guitar*
B.M., URI
RACHEL MALONEY, *Fiddle*
ELIOT PORTER*, *Bass, Electric Bass*
JANE REVKIN, *Flute, Recorder,*
Early Childhood
SEE WOODWINDS, BRASS & PERCUSSION
JUDIE TENENBAUM, *Harp*
B.A., Case Western Reserve University;
J.D., Illinois Institute of Technology/
Chicago-Kent College of Law; harp
studies with Alice Chalifoux &
Ann Hobson Pilot
CHRIS TURNER, *Harmonica, Tin Whistle,*
Bagpipes
Music Studies, Ealing College, London

Voice

GABRIEL ALFIERI, *Voice*
B. Mus., RIC; M. Mus., Vocal Pedagogy
& M. Mus., Musicology, New England
Conservatory
KATHLEEN ATTEBERRY, *Voice*
B.M., University of North Texas; M.M.,
University of Michigan; M.M., Southern
Methodist University
ROBERTA JANELLE BISHOP, *Voice,*
Voice Department Chair
B.M., Vocal Performance; M.M., Opera,
Hartt School of Music

KARA LUND, *Voice*
B. A., Voice, University of Rhode Island;
M.M., Voice Performance, Arizona
State University

Ensembles

RICK ANDRE, *Percussion,*
Percussion Ensemble
SEE WOODWINDS, BRASS & PERCUSSION
MARC BLANCHETTE, *RIPY Wind*
Ensemble, Jr. Division Conductor
B.M., Hartt School of Music; M. Ed., RIC
JOHN CURRAN, *Flute, Flute Choir*
SEE WOODWINDS, BRASS & PERCUSSION
JOHN EELLS, *Community Orchestra*
Conductor
B.A., with Honors, York University, York,
England; Graduate Diploma, Royal
Academy of Music, London, England
ERIN QUINTON ERBAN, *Violin, Viola,*
RIPYO String Ensembles Conductor
B.A., RIC
LOIS FINKEL*, *Violin, Chamber Music*
SEE STRINGS
JORGE GARDOS, *Violin, Chamber Music*
SEE STRINGS
WENDY KLEIN, *RIPY Jazz Big Band*
Conductor, Jazz, Rock & Blues
Department Chair
B.A. & Hicks Award, Brown University;
B.M., Berklee College of Music;
M.M., New England Conservatory
KAREN MARKS, *Flute, Suzuki Flute,*
Flute Choir
SEE EARLY CHILDHOOD & SUZUKI
DAVID MARTINS*, *RIPY Wind Ensemble,*
Sr. Division Conductor
B.M., Eastman School of Music; M.M.,
University of Lowell; Tanglewood
Fellowship Recipient
VINCENT MATTERA, *Violin, RIPYO*
Repertory Orchestra Conductor
B.M. & M.M., Music Education, URI
JOHN MCKENNA, *Saxophone, Jazz Combo*
SEE WOODWINDS, BRASS & PERCUSSION
BILL MIELE, *Jazz Bass, Adult Jazz Combo*
AMY RAWSTRON*, *Violin, RIPYO*
Preparatory String Orchestra Conductor
SEE STRINGS
RON SANFILIPPO, *Jazz Piano, Jazz Combos*
SEE PIANO & KEYBOARD INSTRUMENTS
ALEXEY SHABALIN*, *Violin, RIPYO Music*
Director/ Symphony Conductor,
Chamber Music
B.A., M.A., M.A.T., Moscow Conservatory;
A.D. Boston University
CHARLES SHERBA*, *Violin, Chamber Music*
SEE STRINGS
CONSUELO SHERBA*, *Viola, Chamber Music*
SEE STRINGS
PAUL SURAPINE, *Clarinet, Clarinet Choir*
SEE WOODWINDS, BRASS & PERCUSSION
GREGORY TAKEMOTO, *Clarinet, Saxophone,*
Paul Murphy Touring Ensemble
Conductor, Jazz Combos
SEE WOODWINDS, BRASS & PERCUSSION

IRINA TCHANTCEVA, *Piano, Piano*
Department Co-chair, *Chamber Music*
SEE PIANO & KEYBOARD INSTRUMENTS

Early Childhood & Suzuki

DIANA DANSEREAU, *Piano*
B.M., Eastman School of Music; M.M.,
Pennsylvania State University; Ph.D.,
Georgia State University
PAULINKA DEROCHEMENT, *Suzuki Violin,*
Violin, Viola
Diploma in orchestra playing &
teaching, the Sweelinck Conservatory;
M.M., Violin Performance, University of
Louisville; Suzuki training
MYCHAL GENDRON, *Classical and Suzuki*
Guitar, Suzuki Program Coordinator,
Guitar Department Chair
B.M., North Carolina School of the Arts;
M.M., New England Conservatory;
Suzuki training at Hartt Suzuki Institute
& the Ann Arbor Suzuki Institute
DENISE GUILBEAULT, *Early Childhood*
B.M., M.M., Ph.D., Michigan State
University, Gordon Institute for Music
Learning Certified
LAURA GULLEY*, *Suzuki Violin,*
Suzuki String Department Chair
B.S. in Music & Mathematics, Brown
University; Suzuki training at the Suzuki
School of Newton & Hartt, Montreal &
Washington Suzuki Institutes
EMI KULLBERG, *Suzuki Piano, Piano,*
Suzuki Piano Department Chair
B.M. & M.M., Piano Performance,
Mannes College of Music; Suzuki
Training, School for Strings
KAREN MARKS, *Flute, Suzuki Flute*
B.M., Boston Conservatory; flute studies
with William Grass; Suzuki training
with David Gerry at Hamilton Suzuki
Institute
JANE REVKIN, *Flute, Recorder,*
Early Childhood
SEE WOODWINDS, BRASS & PERCUSSION

Music Therapy

EMILY HESS, *Music Therapy*
B.M., Elizabethtown College,
Board Certified
CRYSTAL KING, *Music Therapy*
B.M., Music Therapy Shenandoah
University; M.S. Ed., Simmons College,
Board Certified
KRISTI ROOD, *Music Therapy*
B.F.A. Musical Theatre Performance &
B.M. Vocal Performance, Viterbo
University; M.A. in Music Therapy, New
York University

Music Wellness

MARY DERBYSHIRE, *Alexander Technique*
B.S., Theatre, Northwestern University;
L'Ecole du Mime, Etienne DeCroix;
Alexander Technique Centers
Cambridge, Chicago, New York City;
Post Graduate; Certified teacher of the
Alexander Technique

* Denotes Rhode Island Philharmonic Orchestra player

GENERAL POLICIES

PLACEMENT Classes are subject to availability and student prerequisites. Please call the appropriate number for placement in our various programs and branch locations. **Ensembles:** New students must audition: 401.248.7038; **Suzuki:** 401.248.7020; **Early Childhood Classes:** 401.248.7001. **Private Lessons:** 401.248.7001 to schedule an appointment to determine placement with a teacher. The Music School may recommend a placement lesson to assure assignment with an appropriate teacher. The placement fee is the cost of a half hour lesson (*see rate chart on page 20*). Students may enroll at any time; tuition will be prorated as necessary.

REGISTRATION The Music School operates on a two-term schedule: a 33-35 week school year session and a flexible 8-week summer session. The number of group classes and ensembles are scheduled according to faculty availability within each session. Returning private lesson and group class students must submit a completed registration form and tuition deposit to be scheduled with a teacher. Students who have auditioned and been accepted into an ensemble must submit an Ensemble Acceptance Form and tuition deposit prior to attending the first rehearsal. The Music School office will assign registered students into a lesson or group class. If it is not possible to place a student with an appropriate teacher/class during registration, students may elect to place their names on a waiting list or receive reimbursement for the submitted deposit. Student registration is a contract that reserves a specific day/time slot with the teacher each week. It is assumed that students will continue for the entire 33-35 week session (or portion remaining thereof). Students choosing to withdraw before the end of the session must notify the Administrative Office in writing according to the "Withdrawal/Refund" policy listed below.

REGISTRATION FEE Individual: \$26.00; Family (two or more): \$52.00. Registration is one time annually (September through August) per student or family. Fee is due at registration and is not refundable.

LATE REGISTRATION FEE A late registration fee of \$35.00 will be charged to students who attend lessons, group classes or ensemble rehearsals without registering and paying the \$26.00 registration fee.

TUITION PAYMENT Payments may be made at either of the Music School branches or mailed to the Administrative Offices at 667 Waterman Avenue, East Providence, RI 02914. The Music School offers the following payment options:

Option #1 Quarterly: Students may pay their tuition in four quarterly installments.

Option #2 Semi-Annual: Students may pay their tuition in two semi-annual installments. Tuition will be discounted 1 dollar per hour.

Option #3 Annual: Students may pay the total tuition prior to beginning lessons, group classes or ensemble rehearsals. Tuition will be discounted 2 dollars per hour. Semi-annual and annual tuition payments must be received by the scheduled due dates to receive discounts. (Monthly payment plans are optional at an increased tuition rate and must be approved by the Education Business Manager's office.)

LATE PAYMENT FEE: Late payments will be charged a late payment fee of 1.5% per month.

NON-SUFFICIENT FUNDS NSF Fee of \$25.00 will be added to Music School accounts for bounced checks or declined credit cards. Families on automatic installments must notify the Music School if credit card has been replaced prior to scheduled payment to avoid fees.

DISCOUNTS Students enrolled in several programs at the Music School may be eligible for a tuition discount. See "Fees and Discounts" for a complete list of discounts offered.

WITHDRAWALS In the event that a student elects to discontinue lessons before the end of the session, the student must submit a written notice to the teacher. "Withdrawal Notice Forms" are available at the front desk. The teacher will approve the withdrawal notice and submit it to the Music School administrative staff to be processed.

REFUNDS There are no refunds for registration fees and tuition deposits (3 credit lessons or deposit amount for group class or ensemble tuition). Other pre-paid tuition for private lessons may be transferred to another family member studying at the Music School, held in reserve for future registration fees and tuition, or, if requested in writing by the student, refunded. Pre-paid tuition for group classes or ensembles is not refundable.

ATTENDANCE/ABSENCES Regular attendance is expected. Students taking private lessons are allowed one excused absence between September – December and one excused absence between January – June PROVIDED a voicemail message is left at the Music School's front desk 248-7001 by 11 a.m. on the day of the absence. If the school is not notified by 11 a.m. on the day of the absence, (except in cases of a serious emergency) the absence will be classified as unexcused. Once a student has taken an excused absence, all other absences will be unexcused. Unexcused absences are not subject to make-ups, credits or refunds. The Music School reserves the right to dismiss a student with poor attendance at any time. In cases of prolonged illness or injury, the teacher must be notified of all lessons that will be missed. We may request a doctor's note or other medical document to credit the student for the missed lessons. If a teacher cancels a lesson, it is his or her responsibility to make up the lesson.

MAKE-UP LESSONS We reserve two weeks for make-up lessons at the end of the school term. Please see the "Calendar" for make-up week dates. Private lesson students must be available during these weeks to receive make-up lessons. Teachers may schedule make-ups during make-up weeks, or at a mutually convenient time, for excused absences, teacher cancellations or inclement weather cancellations. If a student misses an appointed make-up lesson, it is considered unexcused and is not credited to the student's account. Excused absences, teacher cancellations and lessons cancelled due to inclement weather that cannot be made up by the close of the term are credited to the student's account. Credits will remain on account for up to one year and are not subject to refunds. No make-ups or credits are given to students absent from a group class or ensemble.

INCLEMENT WEATHER If the Music School closes due to inclement weather, we contact teachers to notify their students. Students may also call 401.248.7001, check the Philharmonic website riphil.org, or check ABC6 and NBC10 or their websites.

TARDINESS/MISSING BOOKS Students who are late for a scheduled lesson or forget their lesson books are not guaranteed their full lesson length. Students more than 15 minutes late for their lesson will be considered absent. The teacher reserves the right to cancel the remainder of the lesson.

FINANCIAL AID Financial aid applications are available at both Music School branches or by calling the Administrative Offices at 401.248.7001. Families applying for financial aid must submit the necessary paperwork annually.

PHOTO & PUBLICITY The Music School uses professional photographers to document lessons, classes and events. These photos may be used in brochures, advertising or public relations activities. If you prefer that your child's photo not be used, please let us know.

DIRECTIONS

Carter Center for Music Education & Performance

Philharmonic Administrative Offices

667 Waterman Ave, East Providence, RI 02914

Carter Center Branch Phone 401.248.7001

Main Office Phone 401.248.7070

Office Fax 401.248.7071

Branch Email cartercenter@riphil.org

Box Office Phone 401.248.7000

From 95 North or 95 South

Take Exit 20 to 195 East to Exit 8. Turn right off the exit onto Route 6; turn right at the light onto Pawtucket Avenue; turn right at the next light onto Waterman Avenue. The Carter Center is the second building on the right, across from Providence Country Day School. Please use the first driveway for the main entrance and visitor parking.

From 195 West

Take the second Seekonk Exit (#1), bear right off exit; turn left at the first light onto County Street; bear right at the light onto Waterman Avenue. The Carter Center is on the left approximately one mile, across from the East Providence Police Department. Please use the second driveway for the main entrance and visitor parking.

From the East Side of Providence

via 195 East

Take 195 East to Exit 8. Turn right off the exit onto Route 6; turn right at the light onto Pawtucket Avenue; turn right at the light onto Waterman Avenue. The Carter Center is the second building on the right, across from Providence Country Day School. Please use the first driveway for the main entrance and visitor parking.

via the Henderson Bridge

Take the Henderson Bridge off Waterman Avenue on the East Side; take the first exit after crossing the river; you will merge onto Massasoit Avenue; curve left with the road, which turns into Waterman Avenue; when the road curves right, move into the left lane; road will curve left again; after curve, merge into left lane to stay on Waterman Avenue; cross Pawtucket Avenue and continue to 667 Waterman Avenue. The Carter Center is the second building on the right, across from Providence Country Day School. Please use the first driveway for the main entrance and visitor parking.



East Greenwich Branch

St. Luke's Church Parish School, 99 Pierce Street, East Greenwich, RI 02818

Phone 401.885.9117

Branch Email egbranch@riphil.org

Hours

Mon - Thurs: 2:30 - 8pm, Fridays: 2:30 - 7pm

From the North

95 South to Exit 9, Route 4. Take Exit 8, Division Street / Route 2; at the end of the exit ramp turn right onto Division Street; pass through one traffic light and proceed for approximately one mile. Watch for a sign which reads "Historic Hill & Harbor District." Division Street forks at this point, take the left fork; proceed for 3/4 mile and turn right onto Rector Street; at the stop sign turn left onto Church Street; pass a baseball field and one house and turn right into the parking lot behind St. Luke's Church.

From the South

Route 1 North to Route 4 North. Take Exit 8 East, Division Street / East Greenwich; at the end of the exit ramp turn right onto Division Street. Follow directions above.

Rhode Island Orchestra & Philharmonic Music School

Non-Profit
Organization
US Postage

PAID

Providence, RI
Permit No. 194

667 Waterman Avenue, East Providence, Rhode Island 02914

Music School 401.248.7001 Main Office 401.248.7070 Fax 401.248.7071 Web riphil.org

