

BRT

Continued from Page D-1
 tarist, has traveled the world for the last 40 years entertaining audiences with his special blend of blues and classic jazz. He's recorded with, played with, or produced many of the most important artists of the last several decades including Bob Dylan, Tom Waits, Ruth Brown, and the Fabulous Thunderbirds.

With 20 albums under his own name and many more as guitarist with countless artists, Duke has achieved what many only dream of — working with many of his musical heroes.

From the time that he heard vocalists Ivie Anderson, Helen Humes and Billie Holiday nearly 40 years ago, he's been looking for a way to celebrate the female song stylists of the 1930s to 1950s, women who he felt interpreted the lyrics of the American master songwriters with depth, sincerity, and a personal flair that's all but forgotten today.

That project crystallized in late 2007 when he heard Sunny Crownover sing at a show at Harvard University.

Duke says, "Her relaxed style and natural stage presence started the wheels turning. I felt I had finally found the vocalist I had been hoping to discover for so many years."

After enlisting a crew of

musicians, Sunny and Her Joy Boys were born. Billy Novick joined in on clarinet and alto sax. An acknowledged master of his instruments, Novick has toured for 35 years, has been a member of the acclaimed New Black Eagle Jazz Band for two decades, and has five solo CDs and nine duo CDs with Guy Van Duser.

Bassist Jesse Williams has played and recorded with Duke for seven years and currently is recording and performing with Al Kooper and Jay Geils.

Guitarist Paul Kolesnikow and Duke have been playing together in duo, trio and quartet situations for many years, and he helps with the group's arrangements.

Duke and Sunny have collaborated on three projects: the critically acclaimed debut "Introducing Sunny and Her Joy Boys," "Stomp! The Blues Tonight," and 2010's "Tales from the Tiki Lounge."

Says Duke, "Sunny's beautiful voice will entrance you and for a little while, the world is a beautiful place and real American music is alive and very well!"

Admission is \$15 in advance or \$17 day of show.

For reservations or information on either show, call the BRT at (401) 725-9272.

Stone Soup

Continued from Page D-1
 Boxes," her work speaks about the world we live in.

Both the Providence Phoenix (1999 and 2001) and R.I. Motif (2005) have nominated her for Best Female Vocalist, and in 2003, the Phoenix added to the honor by including her on a list of "most influential" Rhode Islanders.

In 2006, the University of Rhode Island honors colloquium cited her for "career contributions using music as a tool of peace, non-violence and social justice — changing

the world one song at a time."

She has said her performances reflect lessons from her father, who taught her, "... the most important thing was to play with honesty and heart the same for one person as I would for a thousand. Give it your best."

Stone Soup is located at St. Paul Episcopal Church, 50 Park Place. Tickets are \$15 and available at the door or through PayPal on the website www.stonesoupcoffeehouse.com

Stone Soup is wheelchair-accessible; this is a fragrance-free performance.

Woonsocket Historical Society exhibits photos of the city's industrial past; seeks help identifying people in the pictures.

WOONSOCKET — The Museum of Work and Culture is presenting an exhibit by the Woonsocket Historical and Preservation Society that features rarely seen photographs of Woonsocket mills and people at work in the factories.

Many of these photographs date to the mid-19th and early 20th century.

As part of the exhibit, viewers will have an opportunity to see a collection of significant memorabilia, including:

- The last pair of US Keds sneakers made at the Uniroyal plant in 1970.

- A 1913 payroll ledger from the Falls Yarn Mill.

- Salesman samples of rubber boots from the Woonsocket Rubber Company.

- Employee badges from Taft Peirce and the Rayon Company.

- Old machine and tool manuals.

- Company newsletters

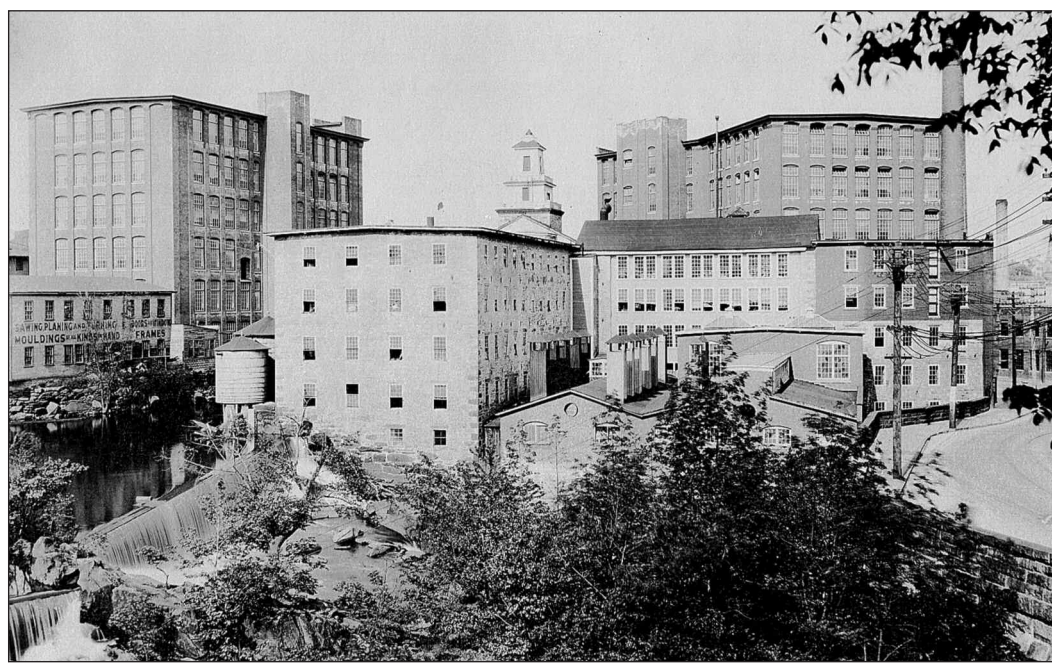


Photo courtesy of the Museum of Work and Culture
 This photo shows the Market Square area of Woonsocket before the flood-control gates were installed. Today the area is the site today of a municipal parking lot. The buildings include the large Woonsocket Falls Mill Complex and, at the far right, the building that houses the Museum of Work and Culture. The photo is part of an exhibit at the museum presented by the Woonsocket Historical and Preservation Society.

and advertising pieces.

- An assortment of washing machine wringers made by the American Wringer Company.

- Panoramic photos of company-sponsored outings can also be viewed.

The Woonsocket Historical Society is seeking the public's help in identifying people in

the photos. As is so common today as it was in the past, photos are taken but never identified.

Anyone with information can contact the front desk at the museum.

The exhibit will be on display through June 12 and is included in the museum admission fee of \$8 adults, \$6 sen-

iors, students and groups of 10 or more, free for children younger than 10 when accompanied by an adult.

Museum hours are Tuesdays through Fridays from 9:30 a.m. to 4 p.m., Saturdays from 10 a.m. to 4 p.m., Sundays from 1 to 4 p.m. For details, call the museum at (401) 769-9675.

SPIRITUAL CONCERT

St. Agatha's Church presents the international singer-songwriter Tajci in a free concert on Tuesday at 7 p.m. at the church, located at the corner of Logee Street and Fairfield Ave., Woonsocket. Called "I Do Believe," the program features Tajci (pronounced Tai-Chee) on keyboards and vocals, backed by electronic instrumentalist Denny Bouchard. Since the spring of 2000, Tatiana "Tajci" Cameron has performed across America, telling in song her personal journey from pop-music superstar to finding a greater purpose in life. Admission is free, but donations will be accepted.



Philharmonic

Continued from Page D-1
 Montreal, Milwaukee, Vancouver and Cleveland, to name only a few. She has performed at Carnegie Hall, Lincoln Center and Italy's La Scala and with the Los Angeles and Saint Paul Chamber Orchestras.

Though her repertoire is extensive, she is particularly acclaimed for her interpretations of Bach, Berlioz, Brahms, Schoenberg and Gustav Mahler, her favorite composer. Her orchestral performances include Mahler's symphonies No. 2, 3 and 8, Beethoven's Symphony No. 9 and Bach's B Minor Mass, among many others.

This concert also brings the Providence Singers to the stage for their annual guest appearance, joined this year by the Rhode Island Children's

Chorus. Founded in 2003, the latter group includes children from more than 30 cities and towns in Rhode Island and Massachusetts.

Noel, founding artistic director of the Children's Chorus and associate conductor of the Providence Singers, prepared both choruses for this performance.

The public is invited to listen in at an Open Rehearsal on Friday at 3 p.m. at the Vets as the orchestra and guests prepare for the formal concert.

Open Rehearsals are an opportunity to observe the process of putting together a symphony orchestra concert. Rachleff will be miked so that people in the audience can hear his discussion and collaboration with the soloist, choruses and members of the orchestra.

Because this is a rehearsal, however, there likely will be stops in the music as Rachleff works with the musicians and vocalists rather than playing the music straight through from start to finish.

There is no guarantee that all of the music for the Saturday concert will be rehearsed at the open rehearsal, nor is there reserved seating. Audience members may sit wherever they wish and can change seats when the orchestra is not playing or at the break, at about 4:15 p.m.

Tickets for the open rehearsal are \$12 for adults, \$7 for students. Tickets for Saturday's Classical Concert are \$30 to \$70. Tickets are available on the Philharmonic website, riphil.org, as well as at vmari.com and artixri.com.

Tickets also are available at

the Providence Performing Arts Center box office, 220 Weybosset St., in person or by calling (401) 421-ARTS.

On Saturday, tickets also are on sale at the Vets box office, in person or by calling (401) 421-2787 from noon until 8:30 p.m. If there are tickets remaining on Saturday at 7:30 p.m., a full-time student with valid student ID card may buy one ticket for \$12.

There is free parking for all Philharmonic Classical concerts at designated lots along Smith Street with limited ADA parking just past Avenue of the Arts on Park Street, or parking is available at the Providence Place Mall for \$1 for three hours.

The Philharmonic provides a free shuttle bus to and from the parking lots before and after the concerts.

Fleming

Continued from Page D-1
 him once again for this Gala Concert."

The London Times has called Fleming "The People's Diva," while the Washington Post described her as "The Beautiful Voice." She is known for captivating audiences with her sumptuous voice, artistry and compelling stage presence.

A three-time Grammy winner, she won the 2010 Grammy Award for Best Classical

Vocal Performance for "Verismo" (Decca/September 2009), a CD featuring a collection of rarely heard Italian arias.

Last June, Decca and Mercury records released the CD "Dark Hope," which features Fleming covering songs by indie-rock and pop artists.

Recent DVD releases include Massenet's "Thais" and Rossini's "Armida," both part of the Metropolitan Opera

Live in HD series, and Verdi's "Traviata," filmed at London's Royal Opera House.

Her 2010 DVD "Renée Fleming & Dmitri Hvorostovsky: A Musical Odyssey in St. Petersburg" follows Fleming and baritone Dmitri Hvorostovsky to Russia, where they explore and perform in some of St. Petersburg's historic locations.

In recent years, this 12-time Grammy nominated artist has recorded everything from Strauss's complete "Daphne" to the jazz album "Haunted Heart" and the movie soundtrack of "The Lord of the Rings: The Return of the King."

She currently is a member of the board of trustees of the Carnegie Hall Corporation, the board of Sing for Hope, and the advisory board of the White Nights Foundation of America. In 2010, she was

named the first ever Creative Consultant at Lyric Opera of Chicago.

Her appearance was announced at a press conference Tuesday by David A. Duffy, chairman of the Rhode Island Convention Center Authority; J.L. "Lynn" Singleton, president of Professional Facilities Management, which operates the Vets and PPAC; and David J. Beauchesne, executive director of the Rhode Island Philharmonic Orchestra.

"We are honored to welcome Ms. Fleming to the Vets at this very important time in the theater's history," Duffy said.

"During her impressive career, Ms. Fleming has headlined a number of distinguished events, including the Noble Peace Prize ceremony and the Metropolitan Opera's 125th Opening Night Gala.

"Ms. Fleming is a luminary in the opera world and she has done a great deal of work to make opera accessible to all types of audiences," Singleton added, noting "her appearance will bring renewed attention to the Vets."

Tickets for An Evening with Renee Fleming and the Rhode Island Philharmonic Orchestra are \$150 to \$35; patrons who purchase \$250 tickets will attend a champagne reception before the concert and will have premium seating.

Proceeds will support artistic programming at the Vets and educational programs at the Rhode Island Philharmonic Orchestra and Music School.

Tickets go on sale Saturday at 10 a.m. at the PPAC/VETS box office, 220 Weybosset St., in person or by calling (401) 421-ARTS, and online at www.thevetsri.com.

Queen's Bingo

THURSDAY NIGHT 6:05

ALL NEW GAMES

- 6 REGULAR GAMES
- SPLIT-THE-POT CASH BUILDUP
- TWO JACKPOTS
- SMOKE FREE •
- FULL KITCHEN •

Our Lady Queen Of Martyrs
 Park Square, Woonsocket, RI

Gamm

Continued from Page D-1

The Gamm Theatre is located at 172 Exchange St. During the regular run, tickets are \$30 and \$40, depending on day and time of performance, but for the preview performances tonight through Monday, tickets are \$25.

Discounts are available to subscribers, groups of 10 or more, seniors and students. For tickets call (401) 723-4266 or log on to gammtheatre.org.

WESTERN HOTEL PIZZA & TAVERN

610 DOUGLAS PIKE, NASONVILLE, RI

568-6253

OPEN FOR LUNCH FRI., SAT. & SUN.
 CLOSED MONDAY

Tuesday-Thursday 4 PM - 10 PM (Kitchen Hours)
 Friday-Sunday 12 PM - 10 PM (Kitchen Hours)

DON'T FORGET MOM!
OPEN MOTHER'S DAY
NOON TO 10:00 P.M.
MOTHER'S DAY SPECIALS!



STADIUM THEATRE
 PERFORMING ARTS CENTRE

The Pulitzer-prize winning Broadway rock musical! Presented by the Encore Repertory Company.

Friday, May 6th at 8 PM

Saturday, May 7th at 2 PM

Saturday, May 7th at 8 PM

Tickets: \$19

Girls Night Out: Comedy Night!

A night of comedy for women... and daring men! Featuring Patty Ross, Christine Hurley and Kitty Litter!

Friday, May 13th - 8 PM

*adult content Tickets: \$16, \$21

Sponsored by Athena's Home Novelties

STADIUM Theatre For children Kids Kamp ages 5-16!

Register today for one of our three sessions!

Session I - July 5th - July 15th

Session II - July 18th - July 29th

Session III - Aug. 1 - Aug. 12th

401-762-4545 www.stadiumtheatre.com

28 Monument Square, Woonsocket, RI

READER'S REWARDS Winners



The critically acclaimed rock musical, presented by The Encore Repertory Company

STADIUM THEATRE
 PERFORMING ARTS CENTRE

Saturday, May 7 at 8:00 PM

Sandra Caswell, Millville
 Nancy Giambusso, Woonsocket
 Henry Letendro, Central Falls
 Anne-Marie Meigges, Woonsocket
 Sheila Stauff, Pawtucket
 Sandy Wesley, Seekonk

Congratulations!

The Restaurant at Crystal Lake

100 Bronco Highway, Mapleville, RI • www.crystallakegolfclub.com

MOTHER'S DAY BRUNCH

Treat Mom to brunch at Crystal Lake Golf Club on Sunday, May 8, 2011

We will be taking reservations at 10:00 a.m. and continue until 1:25 p.m.

RESERVATIONS REQUIRED
 401-567-4500 ext. 10

